

Heath Industrial

Machinery & Equipment Surplus to the Continuing Operations Of A

Major Storage & Rack Manufacturer

ONLINE AUCTION Fabricating Equipment

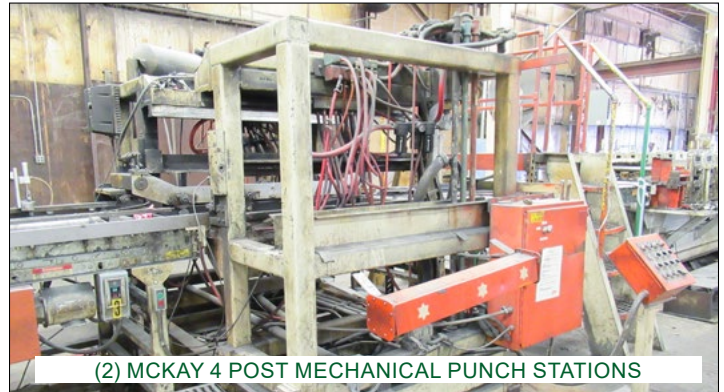
Tuesday
July 21, 2020

Preview / Inspection: Monday, July 20, 8 AM - 3 PM, Earlier By Appointment Only

Asset Location: 1000 W. Barker Avenue, Michigan City, Indiana



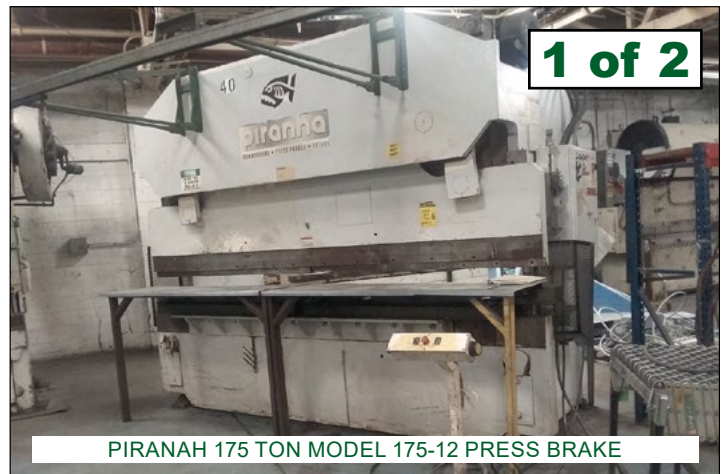
YODER 20 STAND X 48" ROLL SPACE ROLL FORMER



(2) MCKAY 4 POST MECHANICAL PUNCH STATIONS



ARDCOR 10 STAND MODEL F10-1-3/4-13 ROLL FORMER



PIRANAH 175 TON MODEL 175-12 PRESS BRAKE

1 of 2



(6) DREIS & KRUMP & HTC PRESS BRAKES



STAMTEC & MINSTER PRESSES



CINCINNATI SHEAR

Bid Online At
BidSpotter.com

Sale Proudly Held In Conjunction With

ki
auctions
A Division of Kempler Industries

 Heath Industrial

2104 Stonington Ave, Hoffman Estates, IL 60169 • Toll Free 855-88-HEATH
www.heathindustrial.com • auctions@heathindustrial.com

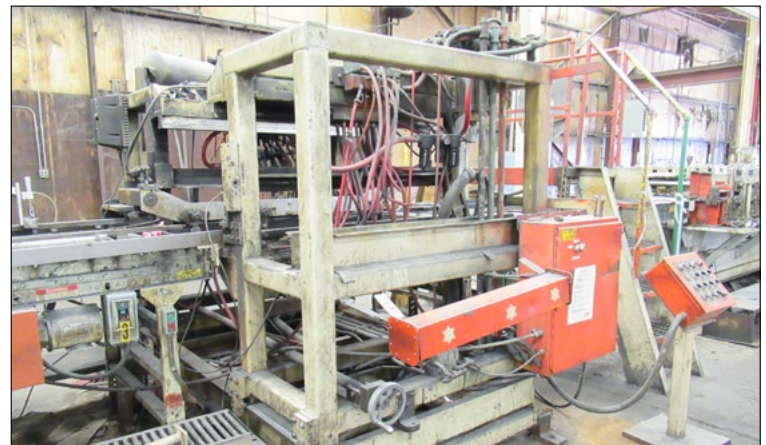
Indiana License Numbers:
Stephen Stabner No. AU01051735

Buyers Premium: 18% Online
Sales Tax: 7.00% Without Proper Exemption

Roll Forming Equipment



ARDCOR 10 STAND MODEL F10-1-3/4-13 ROLL FORMER, S/N 75-311, 1-3/4" Shaft Diameter, 13" Roll Space, 14" Horizontal Centers, 20 HP Motor
5 STAND ROLLER FORMER, 2" SHAFT DIAMETER, 12" ROLL SPACE, 20 HP MOTOR



YODER 20 STAND ROLL FORMING LINE CONSISTING OF:

- **YODER 20 STAND X 48" ROLL SPACE ROLL FORMER, S/N N/A, 2-1/2" Shaft Diameter, 50 HP Gear Drive Motor**
- **INFEED CONVEYOR**
- **10' POWER ROLLER CONVEYOR**
- **ROMAN 120 KVA 6-HEAD SPOT WELDER WITH ROBOTRON 50 CONTROLS**
- **TRANSFER CONVEYOR**
- **(2) MCKAY 4 POST MECHANICAL PUNCH STATIONS, 27"x60" Between Posts, each with Air Clutch and Pedestal Control,**

(TO BE OFFERED IN BULK AND SEPARATELY)

PRESS BRAKES



PIRANAH 175 TON MODEL 175-12 HYDRO-MECHANICAL PRESS BRAKE, S/N 17512-1041, 14' Overall Length of Bed, 10'6" Between Housings, 3/16"x12' Bending Capacity, 8" Stroke, 17" Shut Height, Removable Angle Plates

PIRANAH 175 TON MODEL 175-12 HYDRO-MECHANICAL PRESS BRAKE, S/N 17512-1040, 14' Overall Length of Bed, 10'6" Between Housings, 3/16"x12' Bending Capacity, 8" Stroke, 17" Shut Height, Lower Die Holder

DREIS & KRUMP 175 TON MODEL 175-F-10 HYDRAULIC PRESS BRAKE, S/N H-1513 10' Overall Length of Bed, Automec 2-Axis CNC 1000 Back Gauge, Lower Die Holder

DREIS & KRUMP 275 TON MODEL 275-D-8 PRESS BRAKE, S/N 9520, 10' Overall Length of Bed, Lower Die Holder

HTC 100 TON MODEL 100-10H HYDRAULIC PRESS BRAKE, S/N 10S2T2468, 10' Overall Length of Bed, Auto-gauge 2-Axis CNC 1000 Back Gauge,

VERSION 200 TON MODEL B910-200 PRESS BRAKE, S/N 18642, with Air Clutch, Lower Die Holder

CINCINNATI 115/225 TON SERIES 9 PRESS BRAKE, S/N 34557, 10' Overall Length of Bed, Air Actuated Mechanical Clutch

DREIS & KRUMP 115 TON MODEL 4510-D PRESS BRAKE, S/N P8403, 3/16"x10' Capacity, 10' Overall Length of Bed

DREIS & KRUMP 90/110 TON MODEL 810-M PRESS BRAKE, S/N L15335, 10' Overall Length Bed, with Flanged Ram, Air Clutch, Pedestal Palm Buttons

DREIS & KRUMP 100 TON PRESS BRAKE, S/N 5995, 10' Overall Length of Bed, Lower Die Holder

DREIS & KRUMP 36/55 TON MODEL 46B PRESS BRAKE, S/N L-15073

VERSION 45 TON MODEL 2050 PRESS BRAKE, S/N 14270-2050, 2-1/2" STROKE

PRESSES & ACCESSORIES



STAMTEC 160 TON MODEL G1-160-S GAP FRAME PRESS, S/N G1-160S-0008 10" Stroke, 17.5" Shut Height, 25-40 SPM, Variable Speed Drive, Air Clutch

MINSTER 75 TON NO. 7-101 OBI PRESS, S/N 7-101-21986 4" Stroke, 14.5" Shut Height, 24"x36" Bolster, 90 SPM, Air Clutch

NIAGARA 75 TON MODEL AA4-1/2 OBI PRESS, S/N 35037, 4" Stroke, 15" Shut Height, 24"x36" Bolster, 90 SPM, with Air Clutch

3 - TOLEDO 93 TON MODEL 92-1/2D STRAIGHT SIDE PRESSES

COIL HANDLING SERVOMAX 12" MODEL SMX12H SERVO ROLL FEED, S/N SMX12H132 with Microprocessor Control

COIL HANDLING SERVOMAX 12" MODEL SMX12 SERVO ROLL FEED, S/N 13840 with Microprocessor Control

COOPER WEYMOUTH 24" STOCK STRAIGHTENER, S/N V2471546

COOPER WEYMOUTH 10,000 LB. STOCK COIL REEL, S/N 24P-1287, 24" WIDE X 60" OD

AMERICAN STEEL LINE 4,000 LB. STOCK COIL REEL, S/N 4563, 24" WIDE X 60" OD

SHEAR



CINCINNATI 3/16"X10' MODEL 1410 SHEAR, S/N 31844, with 36" Front Operated Power Back Gauge, 8' Squaring Arm, 2- Front Supports

TOOLROOM



BRIDGEPORT 1 HP "J-HEAD" RAM TYPE VERTICAL MILL, S/N 12BR136039, 42" Table with Power Feed

COVEL 16"X36" HYDRAULIC SURFACE GRINDER, S/N 80-224 with Electro Magnetic Chuck

MATTISON 14"X36" HYDRAULIC SURFACE GRINDER with Electro Magnetic Chuck

WILTON 4' ARM 12" COLUMN RADIAL ARM DRILL with Box Table

MARVEL NO. 8 UNIVERSAL VERTICAL BAND SAW, S/N 810599

PEERLESS MODEL HB916U HORIZONTAL BAND SAW

GROB 18" MODEL NS VERTICAL BAND SAW, S/N 9450

STERLING MCDONOUGH DRILL GRINDER, S/N DC8502

PRATT & WHITNEY MODEL 3B JIG BORER, S/N 28605

PRECISION 60 KVA MULTI-SPOT WELDER, ROBOTRON CONTROL, S/N 961938

ROBOTRON 75 KVA APPROX. HAND HELD SPOT WELDERS WITH ENTRON CONTROL

CNC PUNCH



AMADA 30 TON MODEL PEGA 305072 CNC TURRET PUNCH, S/N AA570067, with Fanuc System 6M Control



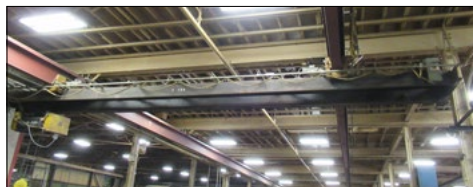
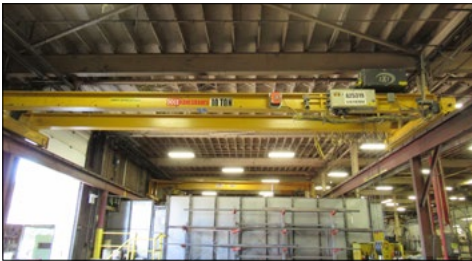
POWDER COAT FINISHING SYSTEM



**EISENMANN 24" WIDE X 72" HIGH OPENING WASH-ER, S/N A40-324-01, 3 STAGE
NORDSON MODEL XL-2001-S ELECTROSTATIC PAINT SYSTEM WITH FEED HOPPERS, FILTERS, 16 - GUNS, SURE COAT, APPLICATION CONTROLLER
MANUAL POWDER COAT BOOTH WITH DUST COL-LECTOR, HOPPER**

**EISENMANN CONVECTION DRY-OFF OVEN, S/N A40-324-02
EISENMANN COOL DOWN BOOTH
HEAVY DUTY OVERHEAD CHAIN CONVEYOR THROUGHOUT SYSTEM
4 - NORDSON HOPPERS
(TO BE OFFERED IN BULK AND SEPARATELY)**

FREE STANDING CRANE & BRIDGE CRANES



FREE STANDING CRANE SYSTEM CONSISTING OF:

- **KONECRANE 10 TON X APPROX. 32' SPAN TWIN GIRDER BRIDGE CRANE, S/N 2187830, with CXT 10 Ton Hoist, Radio Control,**
- **UESCO 7-1/2 TON SINGLE GIRDER UNDERSLUNG CRANE, S/N 93-420, with Pendant Control,**
- **APPROX. 165' FREE STANDING RUNWAY WITH UPRIGHTS**

(TO BE OFFERED IN BULK AND SEPARATELY)

**ROBBINS & MEYERS 5 TON X APPROX. 70' SPAN BRIDGE CRANE with Pendant Control
5 TON UNDERSLUNG CRANE X APPROX. 30' SPAN with Pendant Control
INDUSTRIAL CRANE 3 TON UNDERSLUNG CRANE X APPROX. 24' SPAN S/N 40473 with Pendant Control**



Heath Industrial

2104 Stonington Avenue
Hoffman Estates, IL 60169
www.heathindustrial.com

Machinery & Equipment Surplus to the Continuing Operations Of A

Major Storage & Rack Manufacturer



ONLINE AUCTION

Tuesday, July 21

First Class Presort
U.S. Postage Paid
Permit # 185
Crystal Lake, IL

ONLINE AUCTION

Machinery & Equipment Surplus to the Continuing Operations Of A

Major Storage & Rack Manufacturer

1000 W. Barker Avenue

Michigan City, Indiana

Bid Online at



Heath Industrial

2104 Stonington, Hoffman Estates, IL

www.heathindustrial.com

email auctions@heathindustrial.com

847.380.1755 (phone) • 224.757.7577 (fax)

commission based auction sales

guaranteed auction sales

cash buyers for complete plants

highest finders fees paid

Tuesday, July 21

Featured Assets Include

Yoder 20 Station Roll Forming Line
Piranah, Dreis & Krump & HTC Press Brakes
Cincinnati Power Squaring Shear
Amada CNC Turret Punch • Toolroom
Stamtec & Minster Presses, Press Accessories
Complete Nordson Powder Coat Line
Free Standing Crane System • Bridge Cranes

Online Bidding: Please visit www.bidspotter.com to sign up to bid online.

Inspection: Monday July 20th, 8 AM - 3 PM

Buyers Premium: 18.00%

Sales Tax: 7.00 % Without Proper Exemption

Payment: Cash, Credit Cards, Certified Checks, Company Checks ONLY With Bank Letter of Guarantee

Pickup / Removal: Curbside Pickup starting Thursday, May 14th. All items must be removed by Friday, May 22nd.

Terms of Sale: Everything sold as-is and where-is, no warranties expressed or implied. See website for complete terms.

Indiana License Numbers: Stephen Stabiner No. AU01051735